

**Argyll and Bute Council**  
Comhairle Earra Ghaidheal agus Bhoid

Corporate Services  
Director: Nigel Stewart



Kilmory, Lochgilphead, PA31 8RT  
Tel: 01546 602127 Fax: 01546 604444  
DX 599700 LOCHGILPHEAD  
e.mail –nigel.stewart@argyll-bute.gov.uk

17 February 2010

## NOTICE OF MEETING

A meeting of the **ECONOMY THEMATIC CPP GROUP** will be held in the **COUNCIL CHAMBER, KILMORY, LOCHGILPHEAD** on **WEDNESDAY, 24 FEBRUARY 2010** at **1:00 PM**, which you are requested to attend.

Nigel Stewart  
Director of Corporate Services

## BUSINESS

1. **APOLOGIES FOR ABSENCE**
2. **DECLARATIONS OF INTEREST (IF ANY)**
3. **MINUTES**  
Economy Thematic CPP Group 25 November 2009 (Pages 1 - 4)
4. **REVIEW OF ECONOMY COMMUNITY PLAN ACTIONS**  
Report by Thematic Lead (to follow)
5. **PARTNER UPDATES**  
Verbal Updates from Partners
6. **ECONOMY THEMATIC CPP SCORECARD**  
Report by Performance Manager (Pages 5 - 6)
7. **FUTURE WORK PROGRAMME**  
Report by Area Corporate Services Manager, Argyll and Bute Council (Pages 7 - 8)
8. **TRANSPORTATION ISSUES**
  - (a) Strategic Update on Local Transportation Strategy
    - Report and Presentation by Argyll and Bute Council (Pages 9 - 12)
    - Presentation by Strathclyde Passenger Transport

(b) Update on Road Equivalent Tariff

**9. INTEGRATION OF STRATEGIC PARTNERSHIPS**

Report by Community Planning Manager (Pages 13 - 28)

**10. RENEWABLE ENERGY ACTION PLAN (REAP)**

Identification of suitable date for presentation on REAP to be given to the Economy and Environment Thematic CPP Groups

**ECONOMY THEMATIC CPP GROUP**

|                                    |                               |
|------------------------------------|-------------------------------|
| Councillor Robin Currie            | Councillor Alister MacAlister |
| Councillor Donald MacMillan        | Councillor Alex McNaughton    |
| Councillor Ellen Morton            | Councillor Andrew Nisbet      |
| Councillor Elaine Robertson        | Councillor Ron Simon (Chair)  |
| Douglas Cowan, HIE (Thematic Lead) | Margaret McSparran, HIE       |
| Shirley MacLeod, ABC               | Eileen Wilson, ABC            |
| Robert Pollock, ABC                | Jonathan Welch, ABC           |
| Ishabel Bremner, ABC               | David Clements, ABC           |
| Audrey Martin, ABC                 | John Binnings, SPT            |
| Alan Comrie, SPT                   | David Cannon, Cal Mac         |
| Jane MacLeod, Business Sector      | Frances Webster, SDS          |
| Kate Fraser, Business Gateway      | Mike Geraghty, ABSEN          |

Contact: Fiona McCallum Tel: 01546 604406

**MINUTES of MEETING of ECONOMY THEMATIC CPP GROUP held in the COUNCIL CHAMBER, KILMORY, LOCHGILPHEAD on WEDNESDAY, 25 NOVEMBER 2009**

**Present:** Councillor Ron Simon, Argyll and Bute Council (Chair)

Douglas Cowan, CPP Thematic Lead, HIE  
Councillor Robin Currie, Argyll and Bute Council  
Councillor Alister MacAlister, Argyll and Bute Council  
Councillor Donald MacMillan, Argyll and Bute Council  
Councillor Alex McNaughton, Argyll and Bute Council  
Councillor Ellen Morton, Argyll and Bute Council  
Councillor Elaine Robertson, Argyll and Bute Council  
Robert Pollock, Head of Economic Development and Strategic Transportation  
Mike Geraghty, Argyll and Bute Social Enterprise Network

**Attending:** Shirley MacLeod, Area Corporate Services Manager, Argyll and Bute Council  
Eileen Wilson, Community Planning Manager, Argyll and Bute Council  
Ishabel Bremner, Economic Development Manager, Argyll and Bute Council  
David Clements, Performance Manager, Argyll and Bute Council

**Also Present:** Councillor Andrew Nisbet, Argyll and Bute Council  
Councillor Al Reay, Argyll and Bute Council

**1. APOLOGIES FOR ABSENCE**

Apologies for absence were received from Councillor Gary Mulvaney.

**2. DECLARATIONS OF INTEREST**

None declared.

**3. MINUTES**

The Minutes of the Economy Thematic CPP Group meeting held on 26 August 2009 were approved as a correct record.

**4. ARGYLL AND BUTE COMMUNITY PLANNING PARTNERSHIP COMMUNITY PLAN 2009 - 2013 - FOR ECONOMY REFER TO PAGES 10 & 11 OF THE PLAN**

The Community Planning Manager presented an updated version of the Argyll and Bute Community Planning Partnership Community Plan for 2009 – 2013 and sought comments from the Group prior to this going before Argyll and Bute Council on 26 November 2009.

**Decision**

1. Agreed that the introduction should be amended to reflect that the Plan is a living document and will be updated as and when required over the next 4 years;

2. Agreed that under “Key Challenges” reference to the condition of the roads network should be included;
3. Agreed that under “Our Priorities for the Next 4 years” the text that reads “We will support and develop competitive and successful businesses...” should be amended to read “We will support and develop competitive and successful businesses including Social Enterprises...”;
4. Agreed that the Economy Thematic CPP Group work programme will include Transport and Tourism with a view to adding these issues to the Action Plan within the Community Plan in the future;
5. Agreed to invite our Transport Partners to the next meeting of the PPG to discuss how Transport issues can be addressed and then to invite our Tourism Partners to the next again meeting in May 2010 to discuss how tourism issues can be addressed; and
6. Noted that the mechanism for the Group to update the Community Plan as it progresses its work is through recommendations to the CPP Management Committee.

(Reference: Argyll and Bute Community Planning Partnership Community Plan 2009 – 2013, submitted)

**5. DEVELOPMENT OF ECONOMY THEMATIC CPP GROUP SCORECARD - REFER TO PAGE 25 OF THE COMMUNITY PLAN**

The Performance Manager gave a presentation on the Council’s Performance Management System, Pyramid, which would be the tool used by the PPG to scrutinise areas of work identified as a priority through the development of a Scorecard for the Group.

**Decision**

1. Noted the contents of the Economy Thematic CPP Scorecard and agreed that it was critical and urgent that Partners were allowed access to the system; and
2. Agreed that the Business Gateway targets should be added to the Scorecard.

**6. CPP CONFERENCE**

The Community Planning Manager provided an update on progress with the arrangements for the CPP Conference.

**Decision**

Noted that arrangements for the CPP Conference were progressing and that it was hoped to hold this over 2 days week commencing 29 March 2010 and that it would tie in with the Scottish Rural Network coming to Argyll.

**7. FUTURE MEETING DATES**

As part of the Council's review of Political Management Arrangements it had been agreed that the Thematic CPP Group would meet four times per year. A report recommending a programme of meetings for the Group for 2010 was considered.

**Decision**

Agreed that the Economy Thematic CPP Group would meet on the following dates during 2010:

Wednesday 24 February 2010  
Wednesday 26 May 2010  
Wednesday 25 August 2010  
Wednesday 24 November 2010

(Reference: Report by Area Corporate Services Manager, submitted)

This page is intentionally left blank

---

**Argyll and Bute Community Planning  
Partnership**



**Economy Thematic Group  
24 FEBRUARY 2010**

---

**Thematic Group Scorecard**

---

## **SUMMARY**

The Community Planning Partnership's Economy Thematic Group has identified a number of areas of interest including the Economic Development Action Plan, as well as the Single Outcome Agreement and Community Plan.

Progress of these plans and strategies will be monitored using Pyramid and through the developing Economy Thematic Scorecard.

The Thematic Group could consider which Strategic Partnerships are appropriate for monitoring through their Scorecard.

The Scorecard is attached.

For further information, please contact:

David Clements  
Performance Manager

E-mail [david.clements@argyll-bute.gov.uk](mailto:david.clements@argyll-bute.gov.uk)

Telephone 01546 60 4205

| Economy Thematic Group Scorecard                       |    | Dec 09      |                       |
|--|----|-------------|-----------------------|
| National Outcomes (SOA)                                |    | Actions due | On track Status Trend |
| 01 We live in a Scotland, attractive for business      | 18 | 8           | ✗ ↓                   |
| 02 Economic potential, better employment opportunities | 90 | 45          | ✗ ↓                   |
| 03 We are better educated and skilled                  | 6  | 2           | ✗ ↓                   |

| Argyll & Bute Strategic Partnerships     |       |
|--|-------|
| Argyll & Bute Social Enterprise Network  | ⬆️ ⬆️ |
| Construction Excellence Partnership      | ⬆️ ⬆️ |
| Argyll & Bute Social Economy Partnership | ⬆️ ⬆️ |
| Argyll & Bute Renewable Alliance         | ⬆️ ⬆️ |

|                          |         |          |          |       |
|--------------------------|---------|----------|----------|-------|
| Community Plan - Economy | Actions | Total No | On track | ⬆️ ⬆️ |
|                          |         | 5        | 3        |       |
| SOA Economy Outcomes     | Actions | Total No | On track | ⬆️ ⬆️ |
|                          |         | 43       | 1        |       |
| Community Engagement     | Actions | Total No | On track |       |
|                          |         |          |          |       |

|                    |              |              |              |
|--------------------|--------------|--------------|--------------|
| CPP Thematic Risks | <b>R</b> = 1 | <b>A</b> = 6 | <b>G</b> = 2 |
| Risk - % exposure  | FQ2 09/10    | FQ3 09/10    | ↑            |
|                    | 40.44 %      | 40.44 %      |              |



---

**ARGYLL & BUTE COUNCIL****ECONOMY THEMATIC GROUP****24<sup>th</sup> FEBRUARY 2010**

---

**ECONOMY THEMATIC GROUP – WORK PROGRAMME**

---

**1. SUMMARY**

The purpose of this paper is to allow the members of the Economy Thematic Group to consider the development of a work programme for the group for the remainder of 2010.

**2. RECOMMENDATION**

To note the need to develop a work programme in line with the terms of reference for the group, and to consider this need in light of the information submitted to the group in regard to the development of a Scorecard.

**3. WORK PROGRAMME**

- 3.1 The Economy Thematic has met three times, and has taken good initial steps in formulating actions relating to competitive and successful businesses, sustainable economic assets and vibrant towns that are centres of economic activity as contained within the Argyll and Bute Community Plan.
- 3.2 The Thematic Group has, additionally, received information about the development of a scorecard for the work of the group, to enable effective monitoring of key actions being progressed in implementing the Economy section of the Argyll and Bute Community Plan.
- 3.3 The group now needs to bring these pieces of work together and formulate a Work Programme which will contain the key actions being taken forward/progressed/scrutinised by the Thematic Group, and link progress reporting mechanisms and timescales into the developing scorecard. This will enable a clear programme of work to be agreed, which will ensure effective monitoring of actions and outcomes in line with the agreed scorecard reporting mechanism into the Council's Pyramid system, and will enable regular updates on progress of the work of the group to be delivered to the Community Planning Partnership Management Committee.

**4. CONCLUSIONS**

Members of the Economy Thematic Group are asked to agree a template for the group's work programme, and, in light of the issues which have been discussed by the group to date, and the information received in regard to developing a Scorecard, to agree the detail of the work programme for the remainder of 2010.

For further information contact: Shirley MacLeod  
Area Corporate Services Manager  
[shirley.macleod@argyll-bute.gov.uk](mailto:shirley.macleod@argyll-bute.gov.uk)

Telephone 01369 707130

---

**ARGYLL AND BUTE COUNCIL****ECONOMY THEMATIC CPP GROUP****Economic Development and  
Strategic Transport****24 February 2010**

---

---

**Local Transport Strategy Update**

---

**1. SUMMARY**

The current Local Transport Strategy (LTS) for Argyll and Bute was endorsed by both the Council and the Community Planning Partnership (CPP) in the spring of 2007, following extensive community consultation. The LTS sets out plans and policies for transport in Argyll and Bute for the period 2007 – 2010 and also indicates future transport aspirations in the region.

The LTS is scheduled to be revised in 2010 however, and the following is an update of progress to date.

**2. RECOMMENDATIONS**

The following paper is an update for noting.

**3. BACKGROUND**

The vision for the current LTS is to enable a vibrant Argyll and Bute and the following objectives were developed to work towards achieving this vision:

- Encourage a growing and sustainable economy in Argyll and Bute;
- Improve people's transport experience;
- Manage the effect of transport on Argyll and Bute's rich natural environment;
- Improve accessibility for all our communities;
- Improve journey safety and personal security for everyone in Argyll and Bute;

An action plan to achieve these objectives was developed through analysis of the current situation in the area, an understanding of the challenges and opportunities present and current transport policy. Securing adequate funding is critical to delivering the action plan and a key function of the LTS is to support funding bids to the Scottish Government.

The LTS is a non-statutory document however, it is considered to provide the following benefits:

- A clear indication of transport policy within Argyll & Bute;
- An opportunity to raise local transport issues and set out future transport aspirations;
- The document aligns transport planning with development planning, community planning, Single Outcome Agreements (SOA's) and other policies;
- Support funding applications for specific transportation projects, which is vital in delivering the action plan;

- The LTS reflects the national and regional transport policies set out in the National Transport Strategy and Regional Transport Strategy;

Regional Transport Partnerships (RTPs) were established in December 2005. Argyll & Bute is included in two of these partnerships;

- Hitrans – covers all of Argyll & Bute with the exception of Helensburgh and Lomond;
- Strathclyde Partnership for Transport (SPT) – Covers Helensburgh and Lomond area;

Following a review of the first set of LTS's the Scottish Government produced a guidance note and this formed the basis of the previous LTS review however, the Scottish Government do not intend to produce any further LTS guidance and the responsibility for this will be passed to RTP's if they wish to do so.

SPT along with its member Council's is in the process of producing guidance with the aim of assisting member Council's produce a simplified LTS which aligns to the NTS, RTS and a range of other policy documents.

Following consultation with their member Council's it is intended that the guidance will be circulated to the Scottish Government who may then take this to the 6 other RTP's for their comments. Hitrans have expressed that they would be supportive of SPT's guidance providing that they are included any consultation process.

Representatives from SPT will be attending the Economy Thematic Group meeting on the afternoon of the 24<sup>th</sup> February 2010 to discuss their guidance.

It is likely that the NTS will be updated shortly and Hitrans have expressed that they are supportive of ABC refreshing their LTS providing that this takes account of the revised NTS. It is however, unlikely that the RTS's will be updated at this stage.

To avoid any abortive work, Argyll & Bute Council intend to wait for SPT's guidance to be finalised prior to progressing with the LTS renewal.

However, before we develop and finalise a new LTS we need assess the success of the current strategy. The current strategy noted that the success of the aspiration/actions contained within it need to be understood in the short (2007-10), medium (2010-2015) and long (2015-25) terms. There was also recognition that these aspirations/actions were dependent on partnership working and factors not in the control of the Council. There is therefore a need to assess the progress of the LTS in the short term taking into account policy developments, partner activities and studies over the last three years.

#### **4. FORWARD PLANNING**

Although there is no national / regional guidance as regards the requirement and development of a new LTS, there are number of major local policy developments and projects that the Council's approach to transport provision and policy needs to recognise:

- The new Economic Development Action Plan
- The forthcoming CPP's Renewable Energy Action Plan
- The work of the new single Local Development Plan
- The CHORD investments

The following sets out a number of themes which are likely to be included within the Council's revised LTS:

## **Infrastructure**

Regular liaison / lobbying with Transport Scotland and Scotland TranServ in connection with improvements to our trunk roads – in particular the A83 landslip at Glen Ogle and the A82.

Road improvements to the 'A' and 'B' class road network including the areas of Lomond, Cowal and Mid Argyll for the benefit of the communities and primary industries.

Maintaining the roads network in accordance with Roads Maintenance and Asset Management Plan.

Progressing the design of major infrastructure projects e.g. Oban Development Road.

## Passenger Transport

Continue to develop the public transport network / infrastructure in Argyll & Bute, e.g. – bus, rail, air and sea.

## **Freight Transport**

Continuing to work with local industries, primarily the timber industry (e.g. Argyll Timber Transport Group), to develop the strategic timber transport network and encourage the shipment of timber by sustainable modes,

## **Sea Transport**

Major involvement in the Scottish Governments comprehensive review of ferry services in Scotland.

## **Active Travel**

Continue to encourage sustainable travel, e.g. –

- Working with other Council departments to ensure the needs of pedestrians and cyclists are considered at the planning stage of developments to maximise opportunities for cycling and walking;
- Implementation of travel plans, both for the Council and private companies;
- Continuation of the school travel plan programme;
- Promotion of car sharing website;
- Working with Council initiatives including Process for Change and the Local Authority Carbon Management Plan to achieve a reduction in business and

commuter travel;

**Safety**

Continuing to raise road safety awareness across the area through:

- Current local educational involvement including the promotion of an interactive whiteboard resource for use in all our Primary Schools and the introduction of a new S1-2 Secondary resource;
- Involvement in a new national project to develop a replacement for the 'Children's traffic Club in Scotland';
- Involvement in the development and promotion of West of Scotland Road Safety Forum cross boundary publicity campaigns, e.g. 'Hero to Zero' and '20mph Zones';
- Monitoring crash and casualty trends and developing a new annual statistical reporting format;

**5. CONCLUSION**

Argyll & Bute Council's LTS is scheduled to be revised in 2010 and this will take cognisance of SPT's finalised guidance. Further detail on this and the proposed review process for the existing LTS will be brought to a forthcoming PPG meeting.

**6. IMPLICATIONS**

|                     |   |
|---------------------|---|
| POLICY              | The LTS is one of a suite of Council policy documents. It continues to set a direction for future investment in transport.  |
| FINANCIAL           | There are no immediate financial consequences to the production of this update. It is important that the LTS Action Plan continues to be seen as the basis for directing funding for future public transport and infrastructure projects. |
| EQUAL OPPORTUNITIES | Improvements to public transport services will increase opportunities for the disabled, the elderly and those without access to a car.  |
| LEGAL               | Whilst there is no statutory basis for the strategy or the Action Plan, it will continue to inform both regional and national transport policy, and has been widely recognised as an example of good practice.                            |

For further information please contact Moya Ingram, Strategic Transportation Manager tel: 01546 604190.

Robert Pollock  
Head of Economic Development and Strategic Transport.

---

**Argyll and Bute Community Planning  
Partnership****ECONOMY THEME GROUP****Date: 24<sup>TH</sup> February 2010**

argyll and bute  
**communityplanning**partnership

---

**Title: Integration of Strategic Partnerships**

---

1. The purpose of this paper is to consider the process to be undertaken in the integration of Strategic Partnerships and their linkages within the Economy thematic provisions relating to competitive and successful businesses, sustainable economic assets and vibrant towns that are centres of economic activity as contained within the Argyll and Bute Community Plan.

**2. RECOMMENDATION**

- 2.1 Consider the Strategic Partnership integration principles as outline in 3.2 of this paper.
- 2.2 Consider the integration flow chart outlined in Appendix 1 as the basis of the integration process for Economic Strategic Partnerships.
- 2.3 Note the Strategic Partnership integration working example. Although relating to Social Affairs it demonstrates the process used to identify the relevant strategic partnerships. Appendix 2.
- 2.3 Consider making further linkages within the flow chart regarding the other integration principles.
- 2.5 Consider the timescale in undertaking this integration process in order to develop the work programme as outlined in the Thematic Groups Terms of Reference

**3. BACKGROUND**

- 3.1 Within the Thematic CPP Terms of Reference the Group has to develop a work programme to review appropriate Strategic Partnerships and their linkages to relevant thematic groups, ensuring Partnership Agreements are in place for all appropriate strategic partnerships.
- 3.2 Suggested framework to work within in undertaking the integration of strategic partnerships to ensure consistency of approach.
  - Systematic integration approach

- Partnership agreement in place
- Prioritises established through evidence based analysis
- Planning and Performance framework in place
- Community Engagement arrangements in place

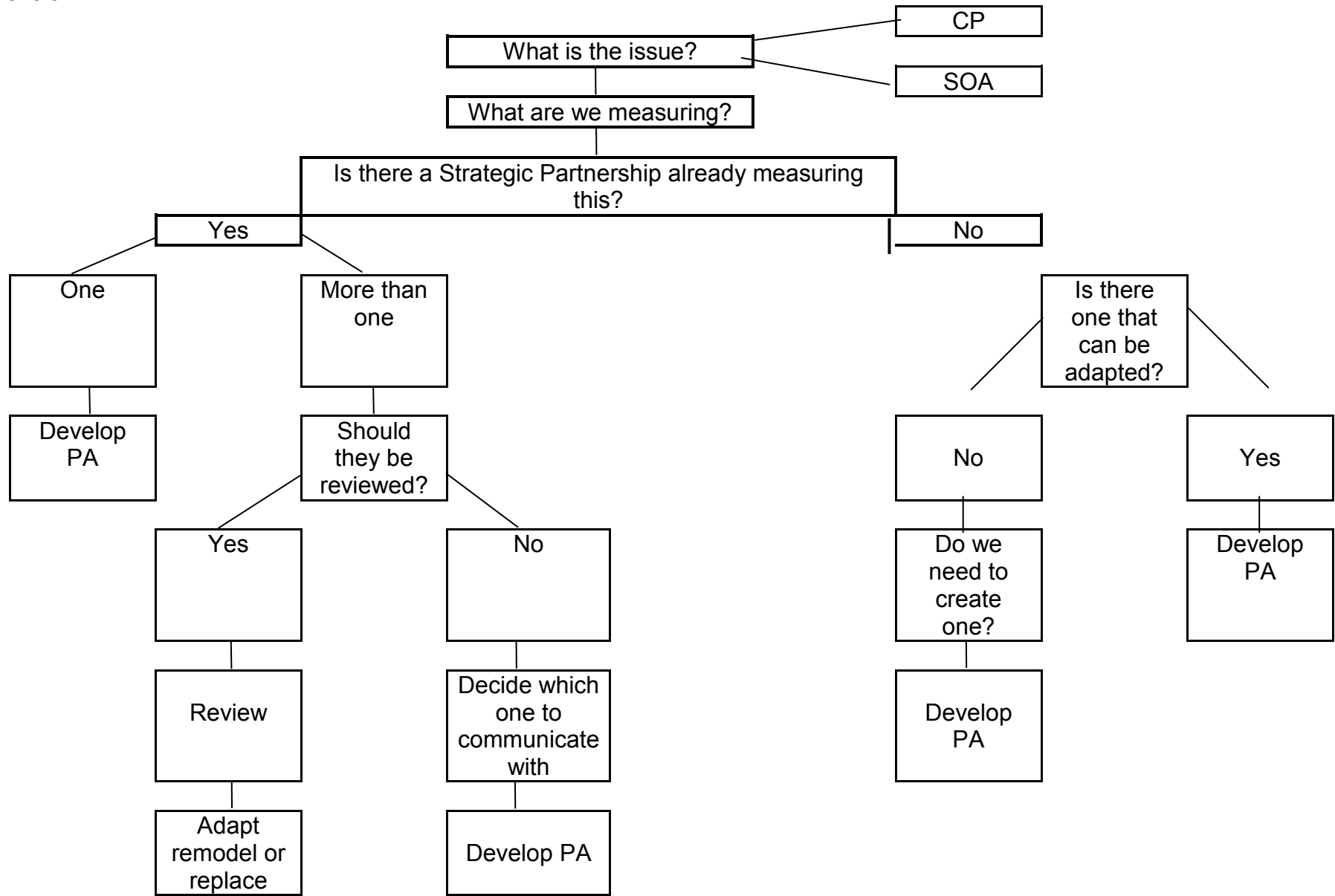
3.3 To ensure that integration principles are considered by Strategic Partnerships further flow chart linkages need to be considered

For further information contact: Eileen Wilson  
Community Planning Manager  
[Eileen.wilson@argyll-bute.gov.uk](mailto:Eileen.wilson@argyll-bute.gov.uk)

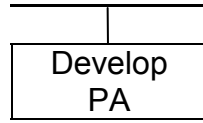
Telephone 01436 658726



THEMATIC GROUPS



Appendix 1



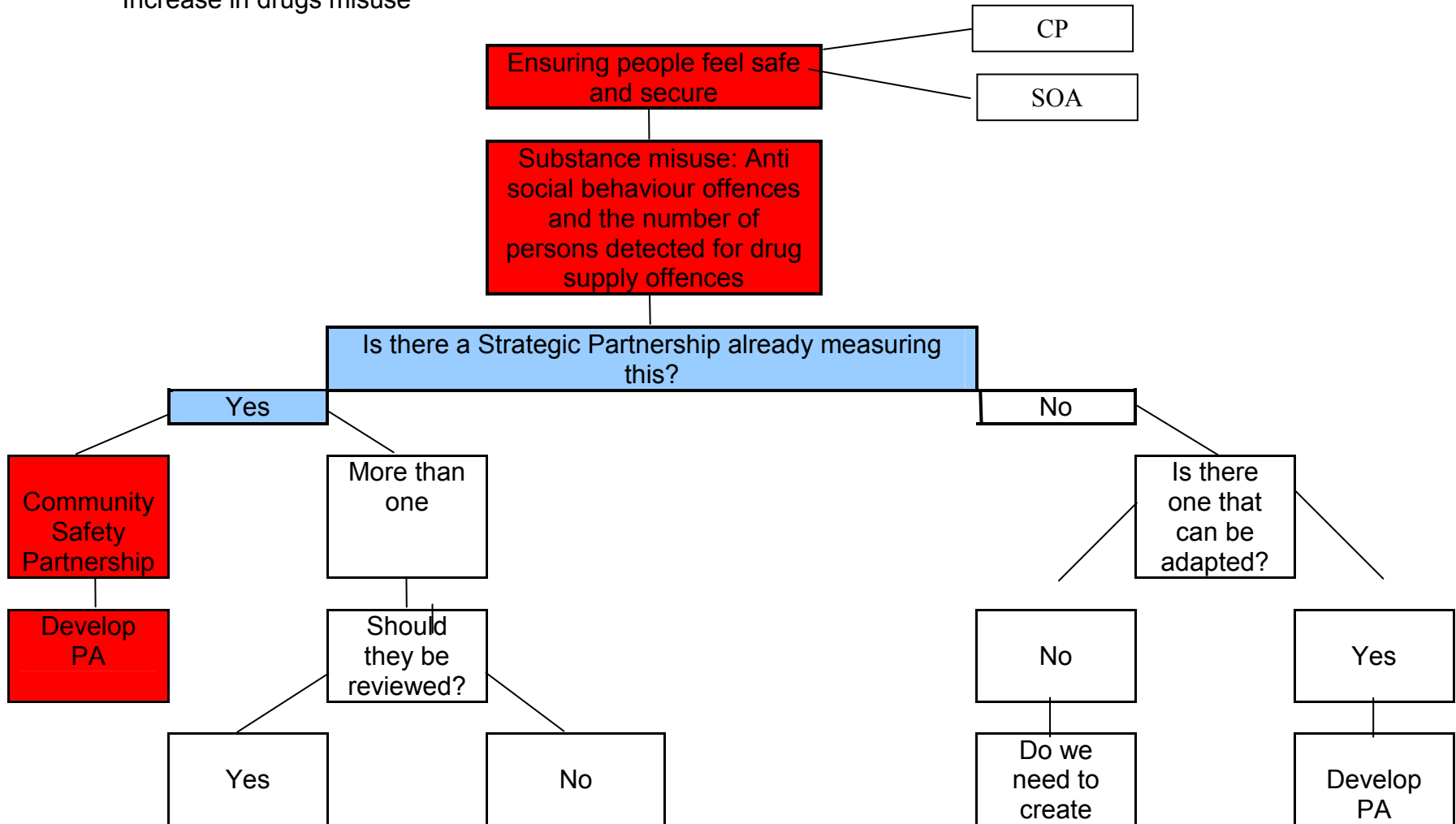
THEMATIC GROUP SOCIAL AFFAIRS  
WORKING EXAMPLE

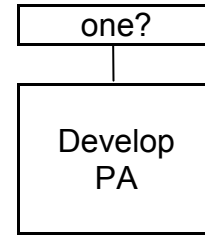
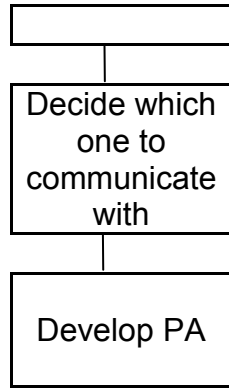
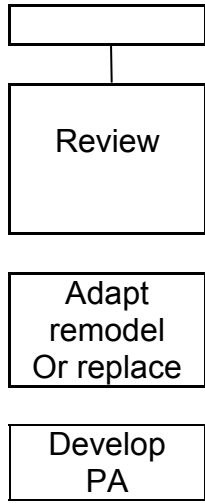
**NATIONAL OUTCOME No. 9**

**We live our lives safe from crime, disorder and danger**


**Risks need to be addressed at all levels**

Associated risks: Violence against people providing service  
Increase in drugs misuse





**Appendix 2**



## Argyll and Bute Strategic Partnerships (Last updated December 2009)

|  |   |  |   |
|--|---|--|---|
|  |   |  |   |
| <b>Argyll and Bute Advice Network</b>  | a partnership of advice agencies aiming to improve the quality of and access to advice for people in Argyll and Bute  | Kate Connelly, Chair of Argyll and Bute Advice Network<br><a href="mailto:kate.connelly@argyll-bute.gov.uk">01546 604116 kate.connelly@argyll-bute.gov.uk</a>  | ✓ |
| <b>Argyll and Bute Against Domestic Abuse and Violence Against Women Partnership (ADA)</b> | - The aim of ADA is to improve on the protection provision and prevention of Women and Children in Argyll and Bute who experience Domestic abuse and violence of any sort. The ultimate aim is to eradicate violence towards women and children.  | Anne Horn, Chair of ADA PATNERSHIP<br><a href="mailto:Anne.horn@argyll-bute.gov.uk">Anne.horn@argyll-bute.gov.uk</a>   | ✓ |
| <b>Argyll and Bute Agricultural Forum</b>  | Argyll and Bute Agriculture Forum purpose is to: raise awareness of agricultural issues across the area, to act as a Forum for discussion about agricultural issues, too promote the sustainable development of agriculture and to create a unique opportunity for all agencies with an interest in land use sectors to work together   | Fergus Younger,<br><a href="mailto:fergus.younger@sac.co.uk">fergus.younger@sac.co.uk</a>  | ? |
| <b>Argyll and Bute Child Protection Committee</b>  | The Argyll and Bute Child Protection Committee is the primary strategic planning mechanism for inter-agency child protection within Argyll & Bute. The Committee membership includes senior representatives from across the range of statutory and voluntary organisations in the area concerned with child welfare. The Committee meets on a regular basis to discuss issues of national interest concerning the protection of children. There is also a clear focus on the promotion of inter agency working and training in the field of child protection and the Committee ensures local policies and procedures are in place for responding to child protection concern. | Robert Grant, chair of committee<br><a href="mailto:Robert.grant@argyll-bute.gov.uk">Robert.grant@argyll-bute.gov.uk</a> or Liz Strang, <a href="mailto:Elizabeth.strang@argyll-bute.gov.uk">Elizabeth.strang@argyll-bute.gov.uk</a> | ✓ |
| <b>Argyll and Bute Childcare Partnership</b>   | Argyll and Bute Childcare Partnership aims to bring together a wide range of providers and service users in the public, private and voluntary sectors in a spirit of co-operation and genuine partnership. Using the shared knowledge, commitment and resources of all partners the partnership   | Alison Mackenzie, Principal Officer Childcare and Education,<br><a href="mailto:alison.mackenzie@argyll-bute.gov.uk">alison.mackenzie@argyll-bute.gov.uk</a>   | ✓ |

|   |   |  |   |
|---|---|--|---|
|   | <p>promotes the expansion of high quality early education and childcare in Argyll and Bute. The partnership also addresses strategically the identified needs of children and families in Argyll and Bute seeking access to and information about early education and childcare services. The Childcare partnership plans and develops early education and childcare services as part of the integrated planning framework for children and young people's services in Argyll and Bute, ensuring that the plans for early education and childcare enhance the care, play and learning experiences of all children in Argyll and Bute recognising the special needs of particular individuals and groups.</p> <p>Note: The Partnership is now in the process of evolving into a group that will work towards implementing the Early Years Framework that was published by the Scottish Government in December 2008</p> |  |   |
| <b>Argyll and Bute Community Health Partnership</b> | Argyll and Bute CHP provides primary care and community services in Argyll and Bute and some acute services, including a wide range of out-patient and in-patient services across four localities: Oban, Lorn and the Isles; Mid Argyll, Kintyre and Islay; Cowal and Bute; and Helensburgh and Lomond.   | Derek Leslie, General Manager, <a href="mailto:derek.leslie@nhs.net">derek.leslie@nhs.net</a> , 01546 605646 and David Ritchie, Communications Manager, <a href="mailto:davidritchie@nhs.net">davidritchie@nhs.net</a> , 01436 655040. | ✓ |
| <b>Argyll and Bute Community Safety Partnership</b> | The Argyll and Bute Community Safety Partnership aims to improve the quality of life of residents and visitors to Argyll and Bute by, as far as possible, reducing risks and protecting them from hazards, threats and the criminal or anti social behaviour of others. The Argyll and Bute Community Safety Strategy 2009 – 2012 has identified five priorities based upon a strategic assessment of community safety issues which involved analysis of data, consultation with partner services and evaluation of resident perception and concerns. The strategic assessment underpins an intelligence led problem solving and planning approach to Community Safety. The following priorities have been identified: <b>Ensuring Neighbourhoods and Towns are Safe from Violence, Antisocial Behaviour and Disorder; Tackling Vandalism and Criminal Damage</b>   | Robert Cowper, Tel 01436 658831, <a href="mailto:Robert.Cowper@argyll-bute.gov.uk">Robert.Cowper@argyll-bute.gov.uk</a>  | ✓ |

|   |   |   |          |
|---|---|---|----------|
|   | <p><b>within Communities and Towns and Ensuring the Environment is Respected and Valued; Improving Road Safety and Promoting Safe Driving; Improving Water Safety; Engaging Residents in Developing Safe Neighbourhoods and Providing Public Reassurance about Personal Safety.</b> These priorities are developed into clear outcome based and focused action plans that are risk based and demonstrate links with wider local and national outcomes. The priorities and action identified by the Argyll and Bute Strategic Community Safety Partnership contribute to the achievement of Argyll and Bute Community Plan objectives and the Argyll and Bute Single Outcome Agreement. Action by the Community Safety Partnership also links with the Scottish Government national objective of a Safer and Stronger Scotland. The five locally based Community Safety Partnerships play a key role delivering the strategy at area level and contribute to monitoring of outcomes and reporting to the Strategic Partnership. Delivery is based upon education and prevention, early intervention and, where appropriate, enforcement action. These multi agency partnerships operate in each of the Council's decentralised areas of Bute and Cowal, Helensburgh and Lomond, Mid Argyll, Kintyre and the Islands, Oban, Lorn and the Isles.</p> |   |          |
| <p><b>Argyll and Bute Health and Care Strategic Partnership</b></p> | <p>The Argyll and Bute Health and Care Partnership is the strategic working forum between the council and NHS Highland / Argyll and Bute CHP. Led by senior members and officers of the Council including the Leader, Spokesperson for Community Services, Chief Executive and Director of Community Services. From the NHS, General Manager and Clinical Director of Argyll and Bute CHP and Director of Community Care NHS Highland. Partnership manages all issues relating to: Joint Service Planning and Service design / re-design; Integration of Services and Management structures; Joint financial planning including resource release proposals; All issues relating to the Joint Performance Indicators and Assessment Framework; (JPIAF) e.g. Delayed Discharge, Local Improvement Targets.</p>  | <p>Council: Douglas Hendry, Director of Community Services<br/> Douglas.hendry@argyll-bute.gov.uk<br/> and James Robb, Head of Adult Care<br/> jim.robb@argyll-bute.gov.uk , 01369-708911 Or 01546-604323</p> <p>NHS: Derek Leslie, Argyll and Bute CHP General Manager<br/> Derek.leslie@nhs.net and Josephine Bown, Argyll and Bute Head of Integrated Care</p> | <p>✓</p> |

|   |   |   |   |
|---|---|---|---|
|   |   | <a href="mailto:Josephine.bown@nhs.net">Josephine.bown@nhs.net</a>  |   |
| <b>Argyll and Bute Local Access Forum</b>             | The Argyll and Bute Local Access Forum are an independent statutory body established under the Land Reform (Scotland) Act 2003. Its members are drawn from land managers, public agencies, community groups and access users. The Forums aim is to provide expert and impartial advice on outdoor access and matters relating to Part 1 of the Land Reform (Scotland) Act. Because of the disparate and complex issues associated with outdoor access this aim can only be achieved through working in partnership with various interest groups   | Douglas Grierson, Access Officer,<br>01546 604228<br><a href="mailto:Douglas.grierson@argyll-bute.gov.uk">Douglas.grierson@argyll-bute.gov.uk</a>   | ✓ |
| <b>Argyll and Bute Local Biodiversity Partnership</b> | The Argyll and Bute Local Biodiversity Partnership was established in 1997 with 31 partners representing government and non-government agencies and organisations. The Argyll and Bute Local Biodiversity Action Plan (AandBCLBAP) was launched in September 2001 with 67 action plans representing land, freshwater and marine and coastal habitat and species. Partners are delivering the actions through projects and as part of their remits. In order to increase public awareness and engagement in the LBAP, Phase I and Phase II of the Community Action for Biodiversity project was developed to support community activities, training and demonstration projects. The Partnership supports the Community Planning Partnership, the Argyll Agricultural Forum, Access Forum, Scottish Working Group on Invasive Non Native species, Firth of Lorn and Loch Creran SAC, Local Action Group- LEADER, the Argyll and Bute Beach Forum and formed the Argyll and Bute Invasive Species Forum. | Marina Curran-Colthart, Local Biodiversity Officer, Kilbowie House, Gallanach Rd., Oban, Argyll PA34 4PF. Tel 01631-569160. email: <a href="mailto:marina.curran-colthart@argyll-bute.gov.uk">marina.curran-colthart@argyll-bute.gov.uk</a> Website: <a href="http://www.argyll-bute.gov.uk/biodiversity/">www.argyll-bute.gov.uk/biodiversity/</a> | ✓ |
| <b>Argyll and Bute Renewable Alliance</b>             | This will be an action coming out of the Renewable Strategy and Action Plan which is currently in very early draft form and which is an action in the new CPP Plan. Hopefully ABRA will be up and running in the early part of the new year.  | Audrey Martin <a href="mailto:Audrey.martin@argyll-bute.gov.uk">Audrey.martin@argyll-bute.gov.uk</a>  | ✓ |
| <b>Argyll and Bute Social Economy</b>                 | To provide strategic support to social enterprises in Argyll and Bute   | Jim McCrossan <a href="mailto:jim.mccrossan@argyll-bute.gov.uk">jim.mccrossan@argyll-bute.gov.uk</a>  | ✓ |



| Partnership  |   |  |          |
|--|---|--|----------|
| <b>Argyll and Bute Social Enterprise Network</b>               | <p>Argyll and Bute Social Enterprise Network is a network for all established and emerging social enterprise throughout Argyll and Bute and Arran and the Cumbraes. A trading social enterprise in its own right as well as a membership based organisation, ABSEN promotes meetings, training, events and newsletters on a regular basis in response to Members needs and to encourage sharing and dissemination of relevant information; it promotes social enterprise as an alternative business model in the area including working directly with community groups, emerging social enterprises, schools and other agencies; it represents Members' interest to statutory bodies and agencies; delivers services throughout the area under contract with HISEZ and the Local Social Economy Partnership; is a signed partner in the Third Sector Partnership, has Director representation on the Demonstration Board, is a Member of the Local Social Economy Partnership and the Economic Thematic Group of the CPP.</p>   | <p>Mike Geraghty ABSEN Development Officer: email <a href="mailto:mike.geraghty@absen.org.uk">mike.geraghty@absen.org.uk</a> Tel 07767 383 380</p>   | <p>✓</p> |
| <b>Argyll and Bute Strategic Housing and Communities Forum</b> | <p>The Argyll and Bute Housing and Communities Forum was established in 2006, following the merger of the Strategic Housing Forum with the Community Planning Partnership Sustaining Our Communities, Culture and Environment theme group. The core membership currently comprises over 22 individual representatives from around 12 separate partner organisations with over a dozen further additional members who participate on an ad hoc basis. Membership reflects a range of interests from national and local perspectives and statutory, private or voluntary sectors. The partnership has an extended remit to monitor, and support the development and implementation of, a range of plans and strategies relevant to housing, land use, infrastructure capacity, and community development, sustainability and engagement. These include: the Local Housing Strategy; the Homeless Strategy; Supporting People Strategy; Fuel Poverty Strategy; Argyll and Bute Local Plan and the Loch Lomond and the Trossachs National Park Plan; Affordable Housing Policy; Communities Scotland Investment Programme; Scottish Water</p> | <p>Malcolm MacFadyen, Head of Community Regeneration, Argyll and Bute Council, 01546 604412 <a href="mailto:malcolm.macfadyen@argyll-bute.gov.uk">malcolm.macfadyen@argyll-bute.gov.uk</a></p> | <p>✓</p> |

|   |  |  |   |
|---|--|--|---|
|   | Development Programme; RSL Wider Role Strategy; Community Regeneration Fund and Outcome Agreements; and the Renewable Energy Policy  |  |   |
| <b>Argyll and Bute Youth Forum</b>                      | Argyll and Bute Youth Forum is a constituted voluntary organisation with charitable status bringing together young people from a number of local youth forums across Argyll and Bute. There are 32 young people on the ABYF with 8 members from each of the Council's 4 decentralised areas. In partnership with Dialogue Youth, ABYF promote and assist with the election of two MSYPs for Argyll and Bute. The ABYF rotates its AGM round the communities of Argyll and Bute and there are normally 4 meetings of the forum each year, including the AGM.  | Martin Turnbull<br><a href="mailto:Martin.turnbull@argyll-bute.gov.uk">Martin.turnbull@argyll-bute.gov.uk</a>  | ✓ |
| <b>Argyll and Bute's Children</b>                       | This group has responsibility for :(i) The commissioning, publication, reviewing and monitoring of Argyll and Bute's integrated children's services plan.(ii)The development of integrated children's service systems including; the further development of FUSIONS, the response to GIRFEC, integrated assessment, and the operational implementation of integrated working.(iii) Ensuring consistency of service and policy development in respect of Child Protection; Early Years; and Children With Additional Social Needs   | Douglas Dunlop, Head of Service – Children and Families, 01546 604256, <a href="mailto:dougie.dunlop@argyll-bute.gov.uk">dougie.dunlop@argyll-bute.gov.uk</a>  | ✓ |
| <b>Argyll and the Islands LEADER Local Action Group</b> | LEADER is part of the Scottish Rural Development Programme (SRDP). The aim of LEADER is to increase the capacity of local rural community and business networks to build knowledge and skills, and encourage innovation and co-operation in order to tackle local development objectives It is a bottom-up method of delivering support for rural development through implementing a local rural development strategy. Support is aimed primarily at small-scale, community driven projects that are pilot and innovative in nature. The Argyll and the Islands Local Action Group is a partnership made up of community sector, public sector and private sector organisations which delivers the programme in the Argyll and the Islands area (Argyll & Bute excluding Helensburgh and Arran and the Cumbraes). The Partnership has 24 members and is chaired by Argyll & Bute Volunteer Centre The secretariat is provided by Argyll & Bute Council | Argyll and the Islands LEADER Project Co-ordinators Lorna Elliott <a href="mailto:lorna.elliott@argyll-bute.gov.uk">lorna.elliott@argyll-bute.gov.uk</a> and Sheila McLean <a href="mailto:sheila.mclean@argyll-bute.gov.uk">sheila.mclean@argyll-bute.gov.uk</a> see also <a href="http://www.argyllandtheislandsleader.org.uk">www.argyllandtheislandsleader.org.uk</a> for further information. | ✓ |

|   |   |   |          |
|---|---|---|----------|
| <b>Argyll Regional Project Assessment Committee (RPAC)</b>                | <p>Responsible for making recommendations for funding under the Rural Priorities Scheme (part of the Scottish Rural Development Program). The committee meets between three and four times a year and consists of representatives from Scottish Government Rural Payments and Inspections Directorate (SGRPID), Scottish Natural Heritage (SNH), Forestry Commission (FC), Argyll and Bute Council, SEPA and Highlands and Islands Enterprise. The committee considers case summaries prepared by officers from SGRPID, FC and SNH and makes recommendations to the Cabinet Secretary for Rural Affairs and Environment who makes the final decision on funding of individual projects</p>  | <p>Bill Dundas<br/> <a href="mailto:Bill.Dundas@scotland.gsi.gov.uk">Bill.Dundas@scotland.gsi.gov.uk</a></p>                                    | <p>✓</p> |
| <b>Fairer Argyll and Bute Partnership</b>                                 | <p>The FAB partnership brings together all relevant partners to coordinate policy and action on tackling poverty, deprivation and health inequalities. A detailed analysis of data for all communities in Argyll and Bute has helped direct future action. Specific areas of work within the FAB Plan are coordinated by other groups that feed into the full FAB Partnership. For example: the Health Improvement Planning and Performance Action Group (HIPPAAG) ensures that there is alignment between action on local needs and national priorities with a focus on: mental wellbeing; tobacco; alcohol; obesity; and early years, and the development of the Community Learning Strategy to ensure that community based learning opportunities are widely available to people of all ages</p> | <p>Jim McCrossan <a href="mailto:jim.mccrossan@argyll-bute.gov.uk">jim.mccrossan@argyll-bute.gov.uk</a></p>                                     | <p>✓</p> |
| <b>Health Improvement Planning and Performance Action Group (HIPPAAG)</b> | <p>This is a group that comprises a cross section of statutory and voluntary organisations and community representatives. The focus of its work is on public health issues that affect the whole population as well as playing particular attention to health inequalities. It comes together to tackle issues that are better dealt with within such a partnership because of the multi-faceted nature of the problem or where the issue is not addressed by separate organisations.</p>   | <p>Elaine C Garman, NHS Highland, Victoria Hospital, Rothesay, 0700 501534 <a href="mailto:elaine.garman@nhs.net">elaine.garman@nhs.net</a></p> | <p>✓</p> |
| <b>Argyll and Bute Health Improvement</b>                                 | <p>The group is working on tackling the areas of the Council's Sport and Physical Activity Strategy which have potential of tackling health issues within the wider public services. This group consists of representatives of</p>  | <p>Muriel Kupris, Community Resources Manager, 01631 572181.</p>  | <p></p>  |

|                                    |   |   |   |
|------------------------------------|---|---|---|
| <b>Group</b>                       | direct services where physical activity and sport can or do play a part in tackling other priorities such as mental health, ageing, physical disability, general health as well as specific health issues such as obesity, exercise on referral, cancer, heart disease, musculoskeletal health etc. Members are drawn from Argyll and Bute Council's Services for young people, older people, community regeneration, children with disabilities, sport and leisure, NHS Highland, Active Schools and sportscotland.  | <a href="mailto:Muriel.kupris@argyll-bute.gov.uk">Muriel.kupris@argyll-bute.gov.uk</a>  |   |
| <b>Young Scot – Dialogue Youth</b> | The Scottish Government, Young Scot and Argyll and Bute Council are working in partnership to deliver a localised youth information package under the initiative of Dialogue Youth. The project aims to ensure young people aged 12 - 26 are fully represented in community planning, enabling them to make informed choices by providing information and opportunities, engaging young people through surveys and consultations and empowering them by providing platforms for them to express their views   | Roanna Taylor, MAYP, Union Street, Lochgilphead, PA31 8JS Tel: 01546 600035<br><a href="mailto:Roanna.taylor@argyll-bute.gov.uk">Roanna.taylor@argyll-bute.gov.uk</a> | ✓ |
| ALL SCOTLAND 2014 LEGACY GROUP     | Willie Young, Principal Leisure Officer represent the Council and CPP on the All Scotland 2014 Legacy Group. This consists of nominated officers from all 32 Local Authorities in Scotland along with their counterparts in all of Scotland's Health Boards. The aims of the group are to promote and drive forward the four pillars of the Scottish Government's 'Games Legacy for Scotland' (Active Nation, Connecting Scotland, Sustainable Scotland and a Flourishing Scotland) using the build up to the 2014 Commonwealth games in Glasgow as a platform to develop a lasting legacy. | Willie Young, Principal Leisure Officer,<br><a href="mailto:willie.young@argyll-bute.gov.uk">willie.young@argyll-bute.gov.uk</a>                                      |   |
| <b>REGIONAL SPORTS PARTNERSHIP</b> | Since the restructuring of sportscotland over the past year, the Government have decided that the development of sport should be progressed on a regional basis in future. Argyll and Bute are designated within the West Region which consists of 13 local authorities stretching from Argyll and Bute through west central Scotlsnd 9including Glasgow) to  | Willie Young, Principal Leisure Officer,<br><a href="mailto:willie.young@argyll-bute.gov.uk">willie.young@argyll-bute.gov.uk</a>                                      |   |

|  |  |  |  |
|--|--|--|--|
|  | <p>Dimfries and Galloway. The Region is the largest of the six in Scotland and will bring additional resources to the area such as coach and club development teams from sportscotland as well as Regional staff from Governing Bodies of Sport.</p> |  |  |
|--|--|--|--|

This page is intentionally left blank